

Aeonica

The New Landscape For Work

Spacestor®

Embracing Change



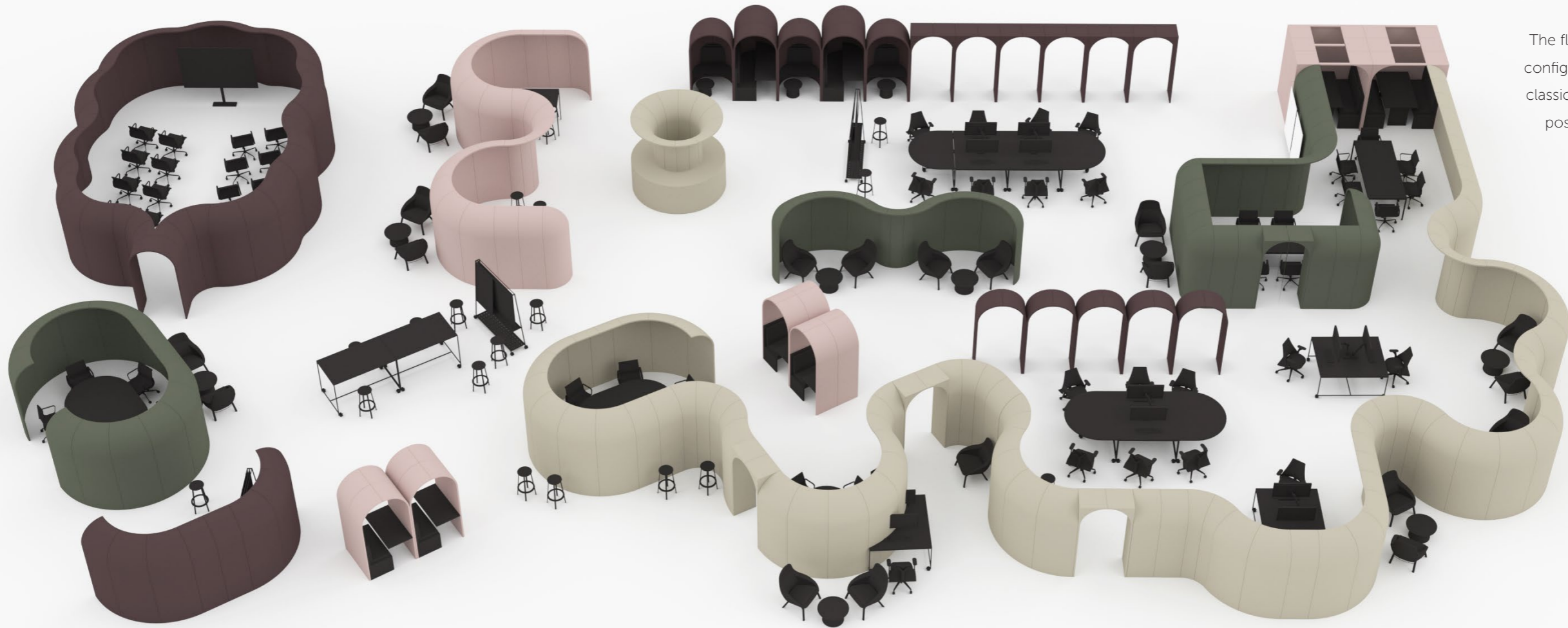
In a world where change is the only constant, the future workspace needs settings that are stimulating, refreshing and highly adaptable.

Introducing Aeonica, a new concept for today's workspaces. A research and design journey spanning over two years and developed in collaboration with global architects; Gensler.

Gensler

Product Design Consultant

Aeonica
The New Landscape For Work



The fluid forms of endless possible configurations take inspiration from classical architecture and are made possible through just five pieces.

Aeonica brings something completely new to the workplace. A new design language inspired by classical architecture bringing softer forms, earthy tones in a micro-architecture toolkit for designers, using just five pieces. Aeonica enables the effortless creation of a vast choice of landscapers and space-makers – from private Cloisters, to spacious Pantheons in almost unlimited combinations.





Taking influences from classical architecture, Aeonica allows the creation of forms that are timeless and instantly familiar.

Using simple but distinct typologies including arches, cloisters, colonnades, rotundas, porticos and pantheons, a whole system of micro-architecture is now available to the workspace designer; a landscaping toolkit that is distinctive, yet not highly directive.





“ IN CREATING AEONICA, WE FELT IT IMPORTANT TO GO BACK TO THE ESSENCE OF ARCHITECTURE AND LANDSCAPE ARCHITECTURE.

Philippe Paré, Gensler





Aeonica's Kit of Parts

The kit form of Aeonica allows maximum flexibility.

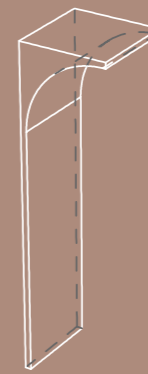
Based on a deceptively simple kit of five inter-compatible pieces, connected with a patent-pending locking system, allowing any designer to create an endless variety of different settings and typologies for the workplace. Essentially an architectural play kit for grown-ups!



Sweep



Inverse Curve



Square Arch



Archway



Corner

Aeonic Forms

Colonnades & Square Colonnades



Niches & Square Niches



Cloisters & Square Cloisters



Pantheons



Chicane Pantheons



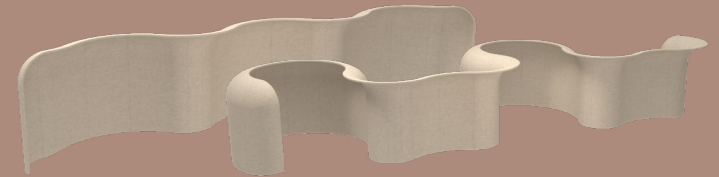
Rotundas



Agoras



Chicanes



One kit, many configurations. The same 24 pieces reconfigured in multiple forms demonstrating the flexibility of Aeonica to work as enclosures, semi-enclosures, space-makers and linear separators.

Components

10 x Archway

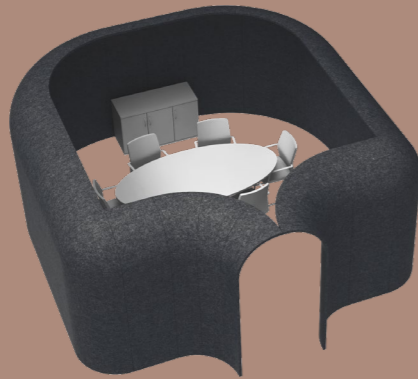
6 x Sweep

6 x Inverse Curve

2 x Corner



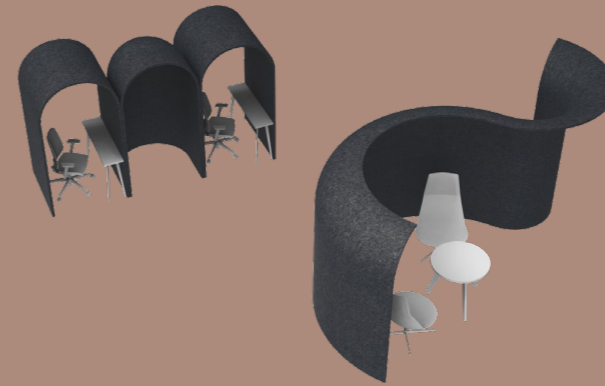
ENCLOSURE CONFIGURATION



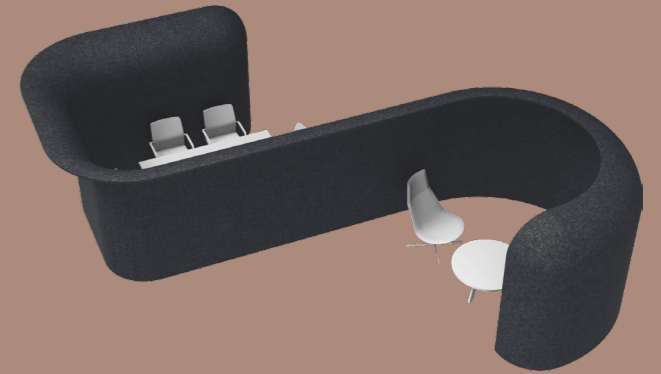
DIVIDER CONFIGURATION



BOOTH CONFIGURATION



SPACE MAKING CONFIGURATION



Micro Architecture



Aeonica is essentially a micro-architecture toolkit opening up incredible possibilities for designers.

Aeonica can be used to blend in or frame a chosen centrepiece, or it can form a centrepiece of its own. All whilst enhancing the acoustic performance of a space.

Spaces can be separated without enclosing. Visual breaks can be inserted, archways can frame or mark a transition between two zones and privacy nooks can be assembled. Then the whole kit can be dismantled and reassembled over and over again.

Every project and every iteration is unique. Designers can play with conventional forms or go wild with their imagination. With Aeonica you don't fear change, you embrace it.



Niches



Meeting Spaces



Dividers



Retreats

Color & Materiality



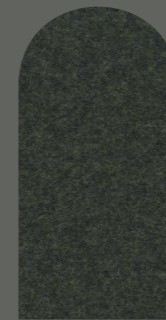
Material Matters

Kvadrat Divina MD is an upholstery textile designed by Finn Sködt. Available in sophisticated, rich colors, which reveal hidden depths as the perspective of the viewer changes, it makes a strong color statement. In addition, thanks to its smooth, directionless and consistent surface, it complements Aeonica's organic shapes.

Divina MD's full-bodied and subtle structure is ideal for bringing an extensive range of tones to life. Its colorways, which are all crafted from a blend of different tones, appear unicolored from a distance, but reveal different color nuances under closer examination.

Aeonica's color palette has been chosen from the Kvadrat Divina MD range, selecting shades that reference classical architecture.

Material colors that evoke limestone, granite and brick are included and at the other end of spectrum, natural colors like green serve as reference to classical landscape architecture.



Dark Green
973



Midnight Blue
783



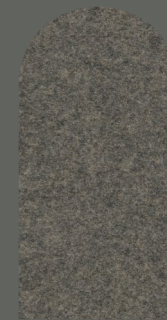
Burgundy
673



Blush
613



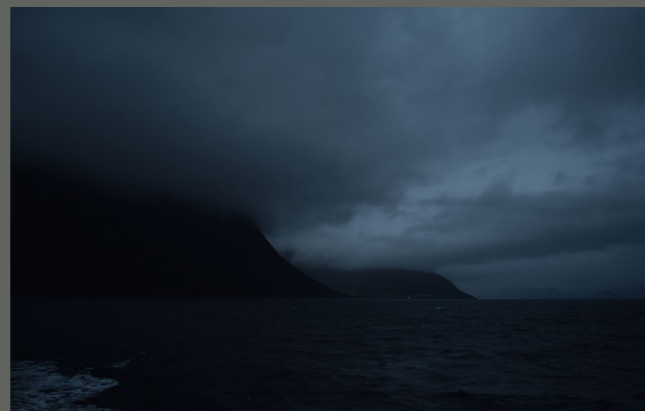
Light Greige
213



Dark Greige
343



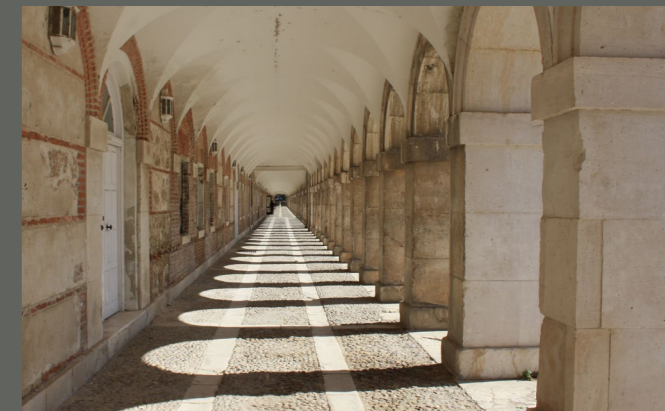
Classic architectural landscape



Fjords of Norway

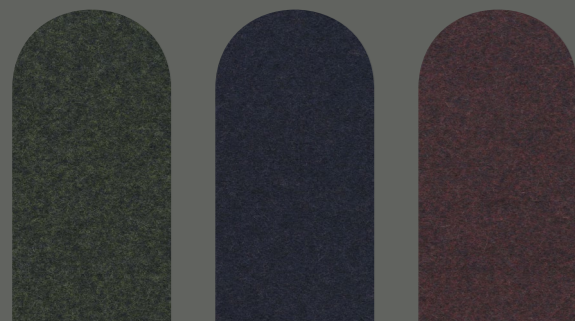


Pink sandstone



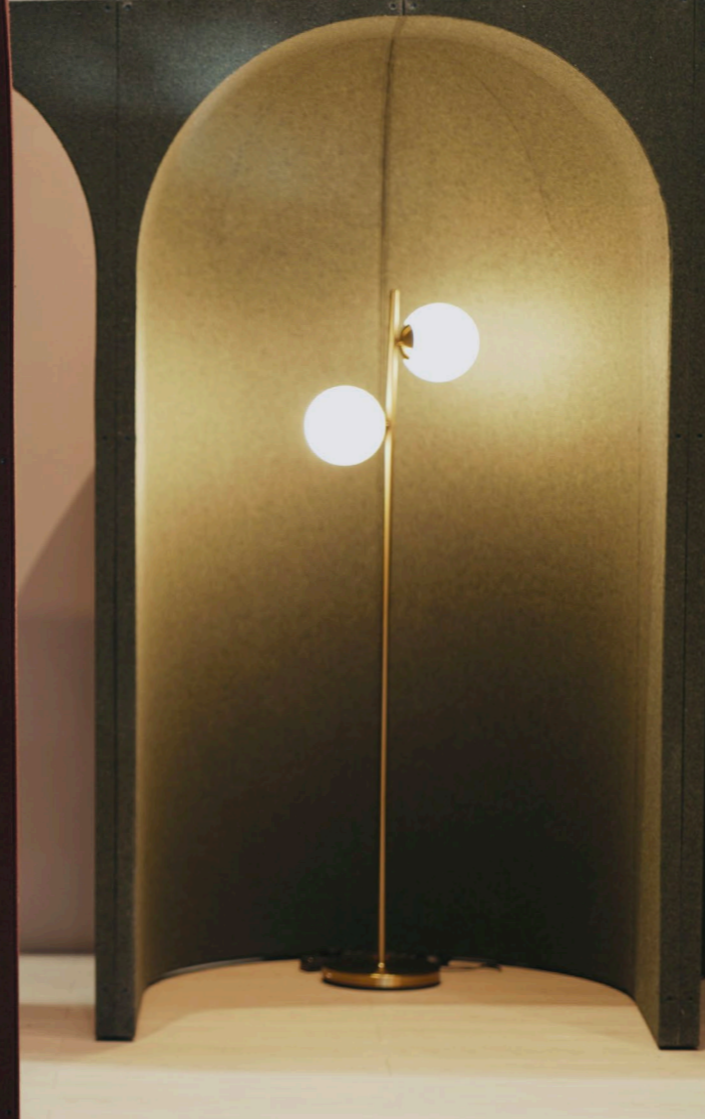
Natural stone colonnade

Rich burgundy shadows of deep canyons



Slate formation





CALIFORNIA COOL
LONDON DESIGN



INTERIOR
DESIGN

www.spacestor.com